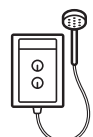
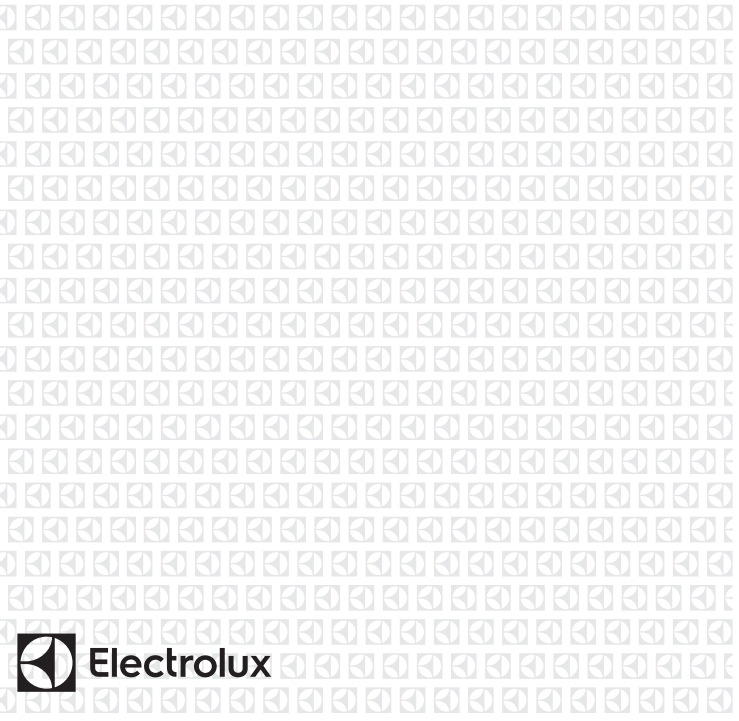


EWE241MX-DST2
EWE381MX1DST2
EWE451MX-DST2
EWE451MB-DST2
EWE481MX1DST2

EWE361MB-DST1
EWE361MA-DST1



EN ELECTRIC WATER HEATER USER MANUAL REV 1



1. PARTS IDENTIFICATION (NORMAL SHOWER MODEL)

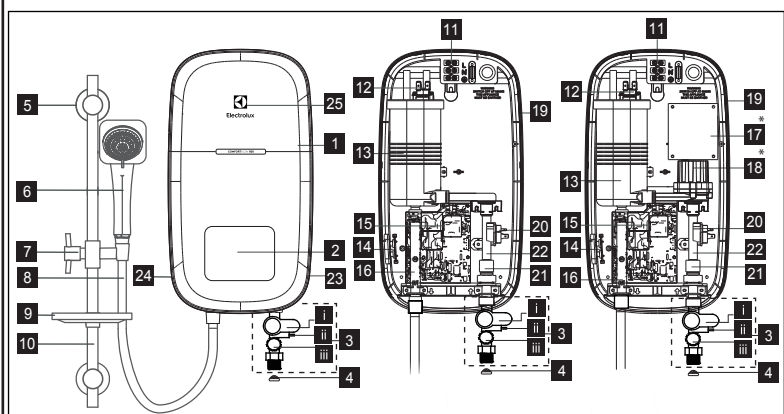


Fig 1. (Thailand, Indonesia, Philippines & Vietnam model)

- | | |
|---|--------------------------------|
| 1. Front Cover | 10. Slider Rail |
| 2. Main Display (*LED Display Main PCB Board behind front cover) | 11. Terminal Block |
| 3. 3 in 1 Stop Valve
i) Stop Valve
ii) Flow Regulator Valve
iii) Built-in-Filter | 12. Thermostat (Double-Action) |
| 4. Mesh Filter | 13. Heater Tank |
| 5. Rail Support | 14. PCB Board (Test & Reset) |
| 6. Handshower | 15. ELCB Board |
| 7. Adjustable Shower Holder | 16. Water Outlet Connection |
| 8. PVC Hose | 17. SMPS PCB Board* |
| 9. Soap Tray | 18. DC Pump* |
| | 19. Heater Base |
| | 20. Triac |
| | 21. Flow Sensor |
| | 22. Water Inlet Connection |
| | 23. Rating Label |
| | 24. Test & Reset Button |
| | 25. Logo Light |

1. PARTS IDENTIFICATION (RAIN SHOWER MODEL)

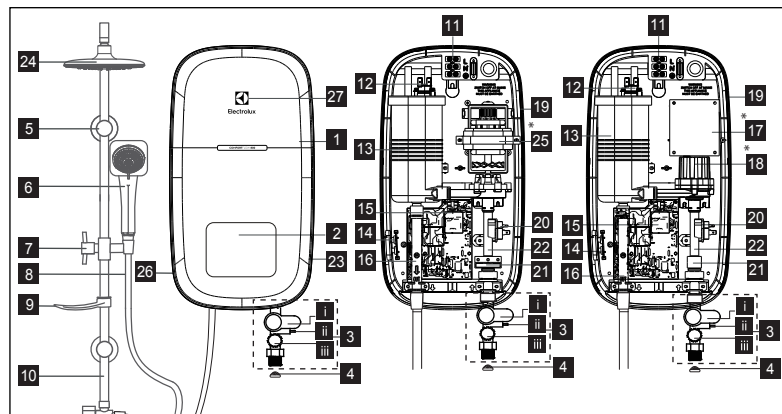
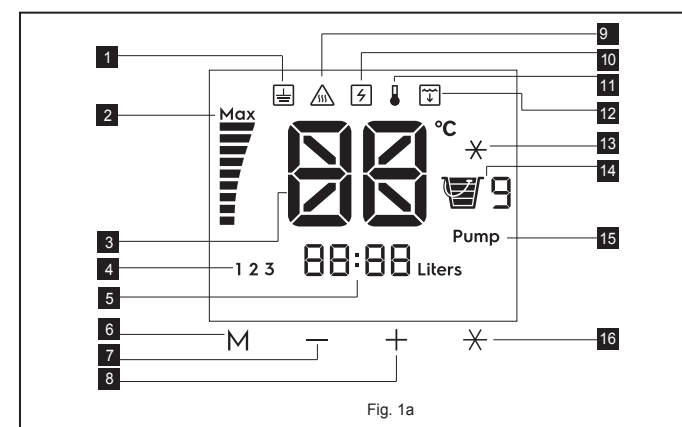


Fig 1a. (Malaysia only)

- | | |
|---|--------------------------------|
| 1. Front Cover | 10. Slider Rail |
| 2. Main Display (*LED Display Main PCB Board behind front cover) | 11. Terminal Block |
| 3. 3 in 1 Stop Valve
i) Stop Valve
ii) Flow Regulator Valve
iii) Built-in-Filter | 12. Thermostat (Double-Action) |
| 4. Mesh Filter | 13. Heater Tank |
| 5. Rail Support | 14. PCB Board (Test & Reset) |
| 6. Handshower | 15. ELCB Board |
| 7. Adjustable Shower Holder | 16. Water Outlet Connection |
| 8. PVC Hose | 17. SMPS PCB Board* |
| 9. Soap Tray | 18. DC Pump* |
| | 19. Heater Base |
| | 20. Triac |
| | 21. Flow Sensor |
| | 22. Water Inlet Connection |
| | 23. Rating Label |
| | 24. Rain Shower Head |
| | 25. AC Pump* |
| | 26. Test & Reset Button |
| | 27. Logo Light |

2. DESCRIPTION OF LED DISPLAY AND CONTROL PANEL



- | | |
|---------------------------|----------------------------------|
| 1. Earth Icon | 9. Overheat Icon |
| 2. Power Display Bar | 10. ELCB Icon |
| 3. Temperature Indicator | 11. Thermistor Icon |
| 4. Memory Indicator | 12. Low Water Pressure Indicator |
| 5. Litre for EcoShower | 13. Cold Shower Icon |
| 6. Memory Button | 14. EcoShower Counter |
| 7. Temperature (-) Button | 15. Pump Indicator |
| 8. Temperature (+) Button | 16. Cold Shower Button |

Notes:

- Memory includes temperature.
- Buttons are 100% lit when unit is ON and buttons are not lit when unit is OFF or standby mode.
- The display and buttons should not blink, unless there is an urgent message/ error/ alarm. While normal operation all interactions shown without the screen segments blinking.

3. SAFETY INFORMATION

WARNING !

3.1 Products manufactured by Electrolux are safe provided they are installed, used and maintained in good working order in accordance with our instructions and recommendations. Always refer to this manual if you have any doubt.

3.2 EARTHING :

A) The Earthing installation should be carried out in accordance with the local Wiring Regulations.
B) The Electric Water Heater must be earthed. Improper grounding such as Earth conductor not grounded (floating) or having high resistance to ground could cause malfunction to ELCB and electrical shock. Never use water heater if there is doubt on Earthing installation.

3.3 If any of the following conditions occur as shown below, immediately switch off the mains and contact the Electrolux Customer Service Call Centre. Never attempt to repair the unit yourself :

- If the Electric Water Heater begins to make an odd noise, smell or smoke.
- If ELCB trips and LED display does not light up.
- Water temperature cannot be controlled.
- If the Electric Water Heater shows signs of a distinct change in performance.
- If water leaks from inside.

3.4 If the LED display does not go off when you turn off the water, SWITCH OFF the mains supply and contact Electrolux Consumer Care Centre for repair service. Special skill is required for repairing. NEVER try to repair the unit by yourself.

3.5 For Pump Model, it is highly recommended to connect the Water Inlet Connection to storage water tank, otherwise it may cause damage to the built in Pump Motor inside.

3.6 When the Shower is used by someone such as child, elderly person, sick person and physically handicapped person, the person concerned is kindly requested to pay attention and check the shower temperature by hand from time to time. User is advised to test and adjust the water temperature before using.

3.7 During taking shower, once stop for a while for washing with soap or shampoo and resuming the shower again by turning on 3 in 1 stop valve or water tap, it is normal that the instant water temperature output from the water heater will be higher than the set temperature. To avoid the risk of scalding, it is advisable to avoid shower with water output in that period, or let the water flow for few seconds before continuing bathing.

3.8 During lightning/thunder, switch off the electric supply to the shower unit in advance to protect the shower unit against possible damage.

3.9 WARNING :

- Metallic / chromed hose and conductive control valve shall not be used.
- Must use 3 in 1 Stop Valve accessories provided with the electric water heater.

NOTE : When removing the unit from package, a small amount of condense water may be found inside. This is normal as the unit is tested during manufacturing process.

CAUTION !

3.10 Installation must be carried out by a qualified personnel and in compliance local authority regulations.

3.11 A) This Electric Water Heater must be permanently connected to the direct main line supply.

B) Recommended to install a power switch for easily to switch ON & OFF the power supply to electric water heater before and after use.
C) Household mains switch box must have a working ELCB (incoming mains power supply) with RCD (residual current device) of 10mA.

3.12 For the correct size of wire conductor corresponding to different electrical loadings, please refer to Table 1.

3.13 This Electric Water Heater operates at a minimum water flow rate of 2.0 litre/min and maximum working pressure of 6 bars. For direct connection from the storage water tank, the Electric Water Heater must have an installation minimum height 1.0m below the storage water tank.

3.14 The Electric Water Heater will not function if there is insufficient water flow (min 2.0 litres/min) to trigger the flow sensor.

3.15 The built-in ELCB will automatically cut off the power supply in case there is a current leakage over 15mA upwards.

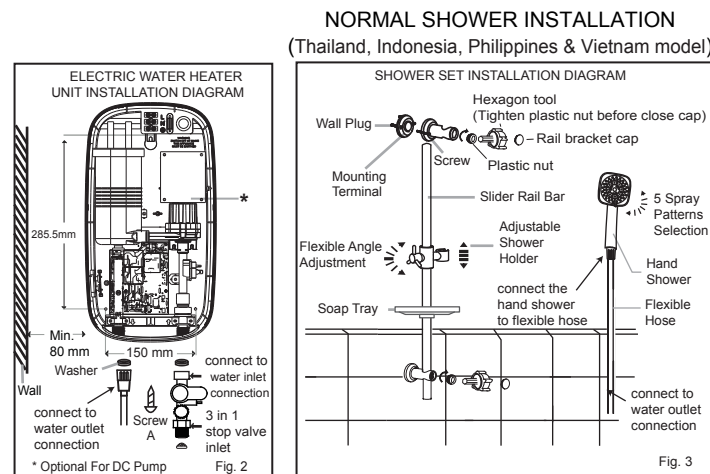
3.16 The thermostat will automatically cut off the power supply if it has sensed an abnormal rise in water temperature.

4. ELECTRICAL LOADING TABLE

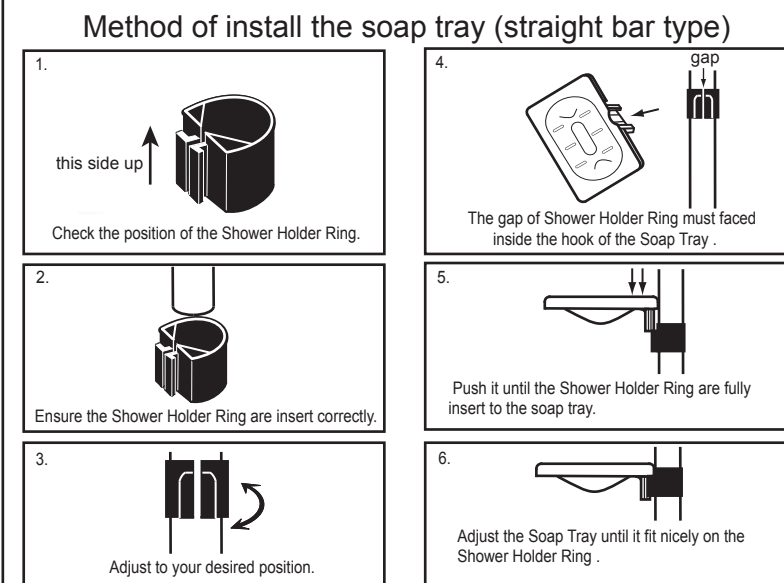
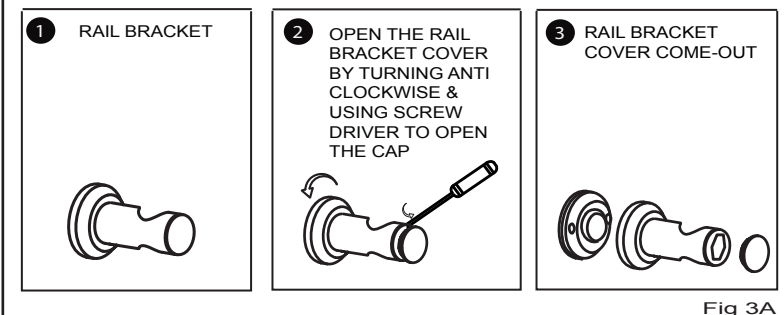
Voltage (AC)	Power (kW)	Current (A)	Conductor Size (csa)		On / Off Switch (A)	Fuse / MCB (A)
			mm ²	Conduit Cable Flexible Cable		
220V ~ 50/60 Hz	2.4	10.9	2.5	7 / 0.67mm	50 / 0.25 mm	20
	3.8	17.3	2.5	7 / 0.67mm	50 / 0.25 mm	32
	4.5	20.5	2.5	7 / 0.67mm	50 / 0.25 mm	32
240V ~ 50/60 Hz (Malaysia model only)	4.8	21.8	2.5	7 / 0.67mm	50 / 0.25 mm	32
	3.6	15.0	4.0	7 / 0.85mm	56 / 0.30 mm	32

5. ELECTRIC WATER HEATER UNIT INSTALLATION

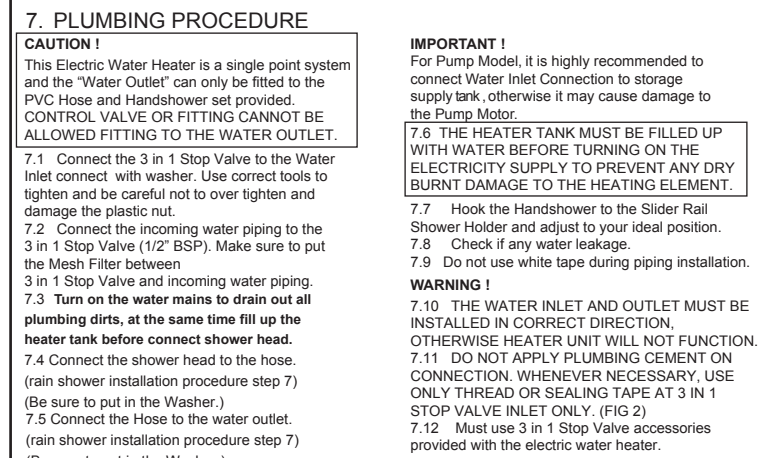
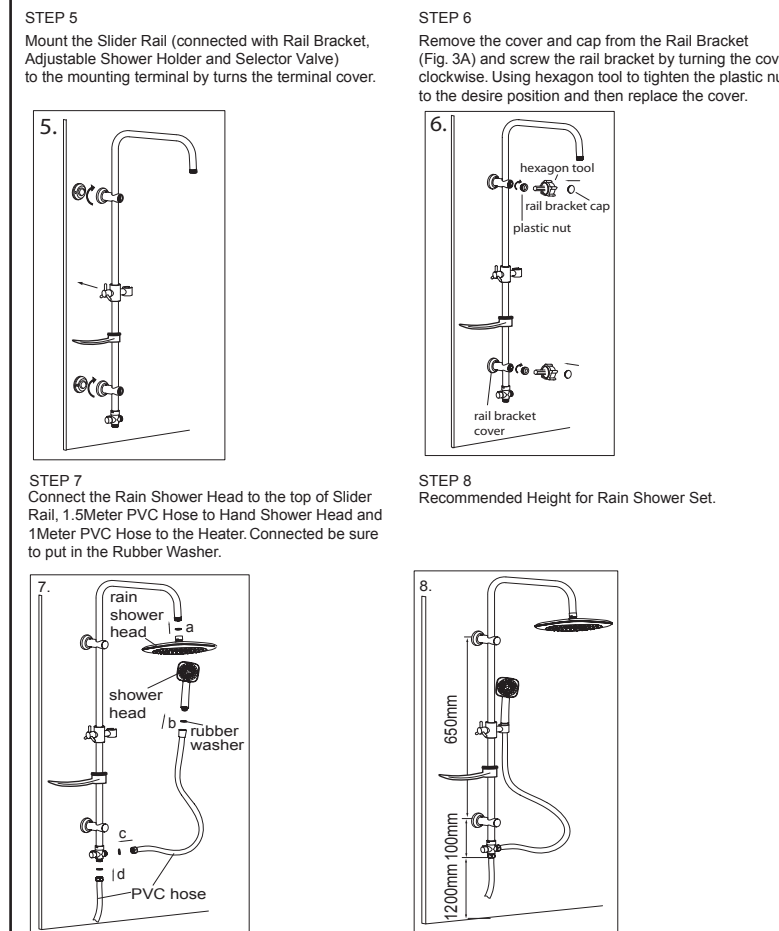
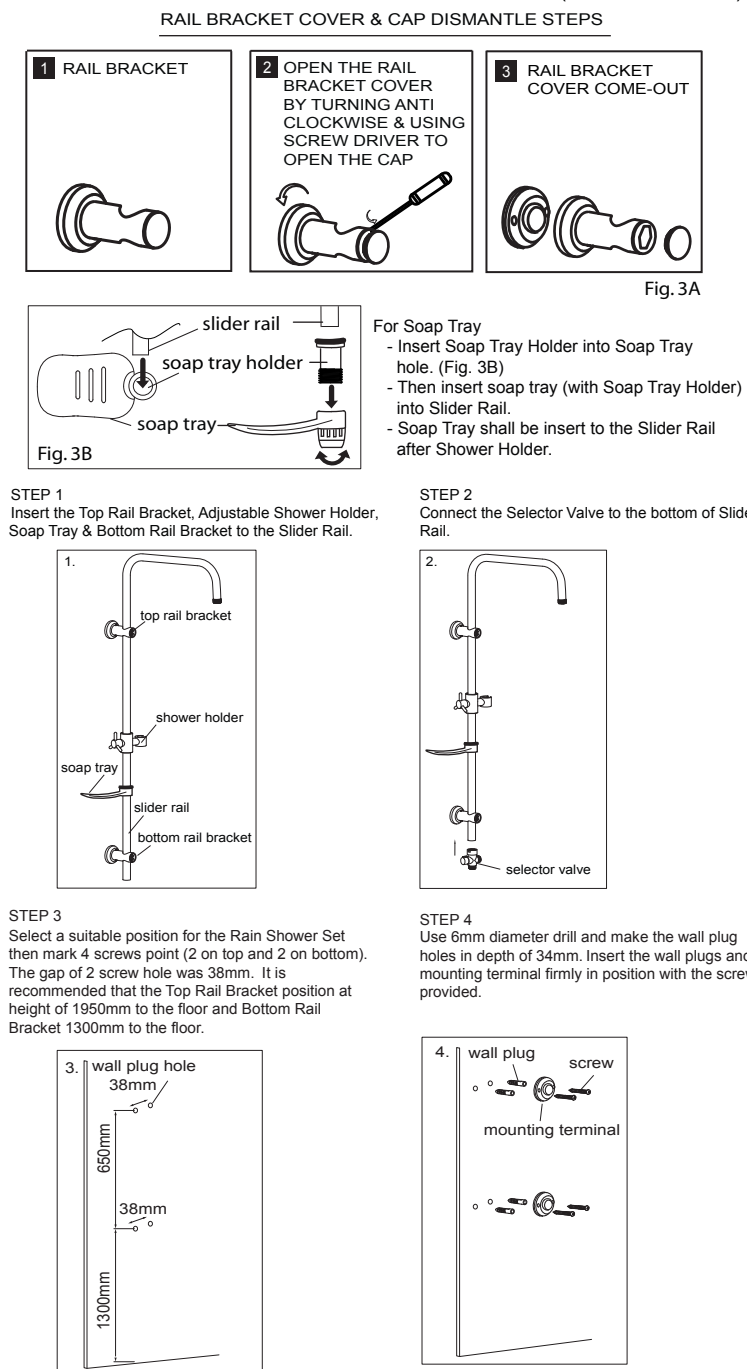
- Select a suitable position in the bathroom.
- Remove the screw (A) at the bottom of the unit. (Fig. 2)
- Remove the Front Cover by lifting up the front cover from the bottom and be careful not to over pull the wire connected between the users interface and main control PCB. Next step is disconnect wire from main PCB.
- Mark 3 Screw points of the Heater Base on the wall. The Heater Base position should be 1.5m above the bathroom floor and the left side should be at least 80mm from side wall. The purpose for user easily to press Test & Reset button by themselves regularly. (Fig.2)
- Select a suitable position for the Shower Set then mark 4 screws point (2 on top and 2 on bottom). The gap of 2 screw hole was 38mm. It is recommended that the top of the portion is in level with the top of Electric Water Heater. (Fig. 3)
- Use 6mm diameter drill and make the wall plug holes in depth of 34mm.
- Insert the wall plugs and mount the Electric Water Heater firmly in position with the screws provided.
- Insert the Shower Holder and Soap Tray into the Slider Rail.
- Mount the Slider Rail to the Rail Bracket.
- Remove the cap from the Rail Bracket (Fig. 3A) and screw the Bracket to marked position. Replace the cap. (Fig. 3)



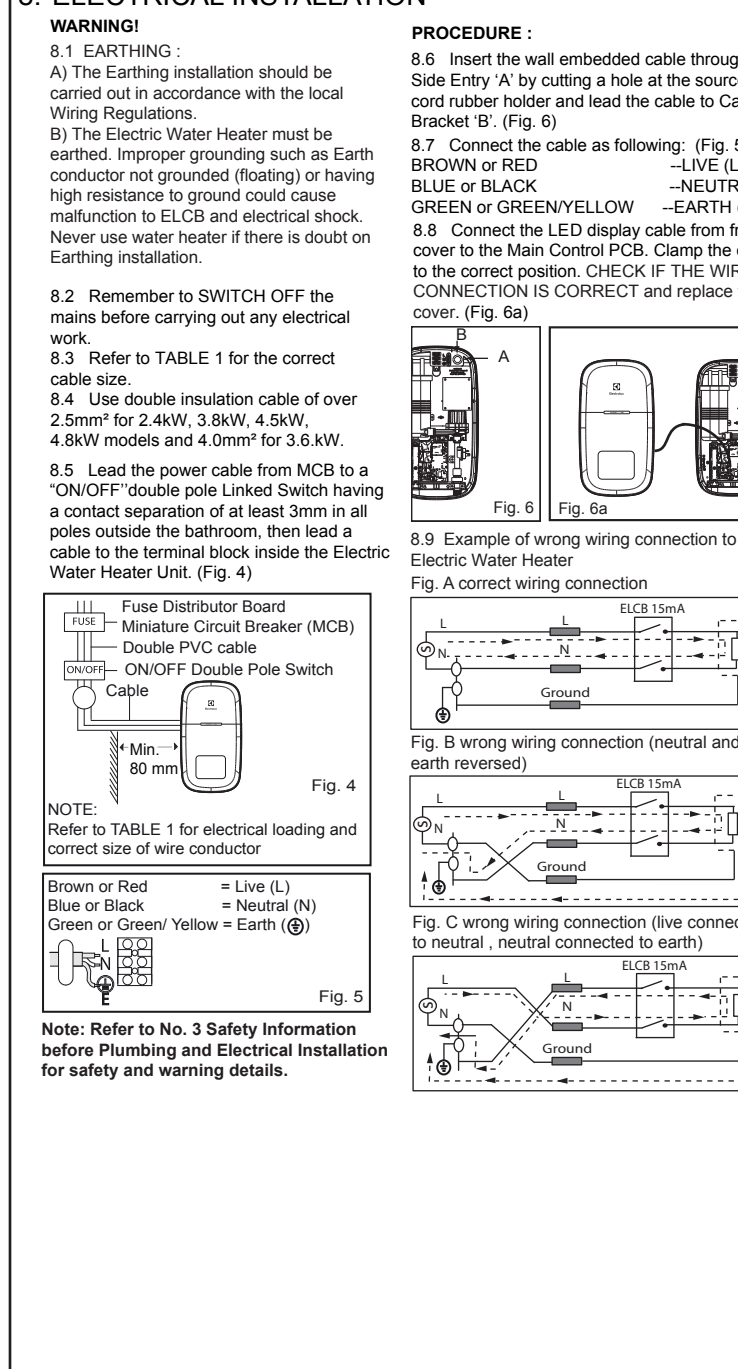
RAIL BRACKET COVER & CAP DISMANTLE STEPS (THAILAND, INDONESIA, PHILIPPINES & VIETNAM MODELS)



6. RAIN SHOWER SET INSTALLATION PROCEDURES (MALAYSIA ONLY)



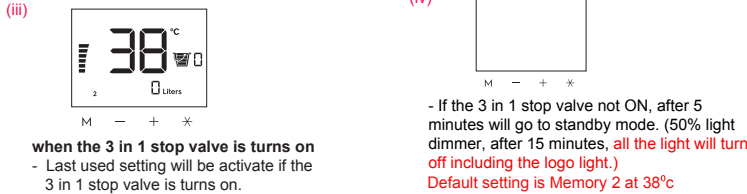
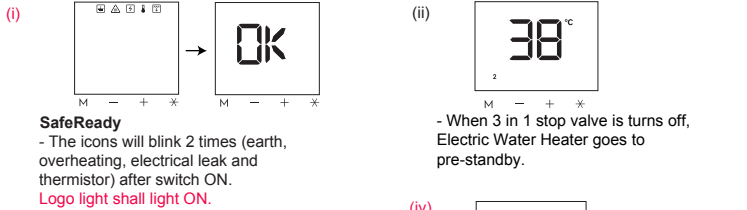
8. ELECTRICAL INSTALLATION



9. TEST OPERATION

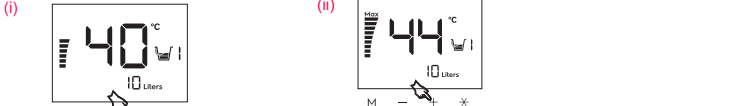
9.1 TEST RUN

Before switch ON electricity supply, please check the electrical wiring connection properly to the Electric Water Heater :-



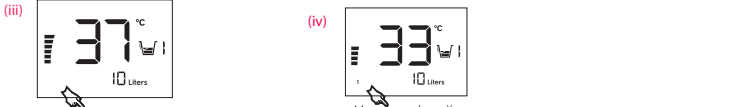
when the 3 in 1 stop valve is turned on
- Last used setting will be activate if the 3 in 1 stop valve is turns on.

9.2 MANUALLY CHANGE TEMPERATURE
The temperature can be gradually controlled by pressing either UP or DOWN button:-



Press (+) button
- Degree goes up.
- Power display bar level changes accordingly to reach the desired temperature.

Press and hold (+) button for 2 sec
- Temperature digits rises at faster speed up to the maximum 45 degree.
- Power display bar adjust accordingly.
- If actual temperature cannot reach the SET temperature, the "MAX" will show & blink. If the actual temperature reaches SET temperature, "MAX" will disappear.



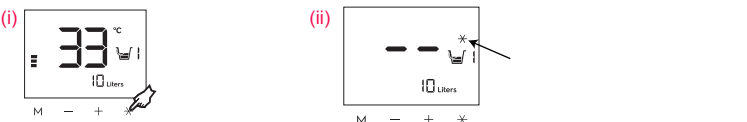
Press (-) button
- Degree goes down.
- Power display bar level changes accordingly to reach the desired temperature.

Press and hold (-) button for 2 sec
- Temperature digits falls at faster speed down to 32 degree and stop autoscroll.
- Power display bar adjust accordingly.
- If the setting reached 32 degree, presses (-) button one more time will trigger the cold water function.

Notes: The memory indicator will appear in the event that the manual selection for the temperature and/or pump (*) value combination which is same as stored memory, the memory indicator will lights up.

9.3 COLD SHOWER SHORTCUT

Cold shower function can be activate via shortcut button:-

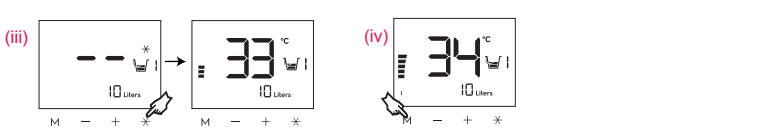


Water heater is running
- User presses the cold shower button.
- After Pressed display changed to 9.3 (ii).

Cold setting activated
- Electric Water Heater turn off the heating element.
- Temperature digits changes to two lines.
- The cold setting (X) icon lights up on the display.

9. TEST OPERATION (CONT'D)

9.3 COLD SHOWER SHORTCUT (CONT'D)



Cold setting deactivated
- Presses the cold shower button then display will go back to previous setting.

Cold setting deactivated (Alternative)
- Pressing the M Button will go to memory setting.
- Pressing (+) button will adjust setting temperature.
- Pressing (-) button will not affect cold setting.

9.4 FOR PUMP MODEL ONLY

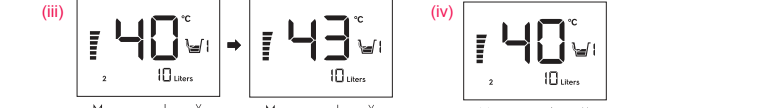
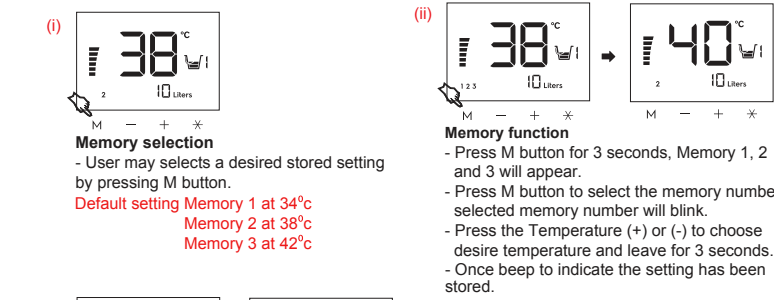
The pump will ON when the Power supply on and 3 in 1 Stop Valve opened.



Notes: 1. If actual temperature cannot reach the set temperature, full power bar will be shown and "MAX" display will blink. It might be due to flow rate too high or incoming water temperature too low. Adjust the 3 in 1 stop valve to reduce water flow.
2. It is recommended not to operate the pump for more than 30 minutes.

9.5 MEMORY SETTING

This Electric Water Heater allows user to store up to 3 desired settings (M1/ M2/ M3) for easy access:-



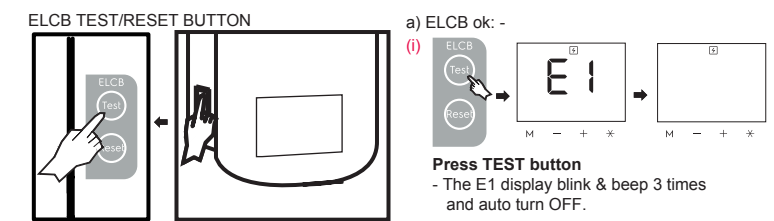
Memory selection
- User may selects a desired stored setting by pressing M button.
- Default setting Memory 1 at 34°C
- Memory 2 at 38°C
- Memory 3 at 42°C

Memory function
- Press M button for 3 seconds, Memory 1, 2 and 3 will appear.
- Press M button to select the memory number, selected memory number will blink.
- Press the Temperature (+) or (-) to choose desire temperature and leave for 3 seconds.
- Once beep to indicate the setting has been stored.

Deactivate the memory function
- Press any button except your current selected memory (1, 2 & 3).
- Press EcoShower button to exit your selected memory, it go to EcoShower Function.

9.6 ELCB TESTING

This procedure is highly recommended to test at least once a month:-



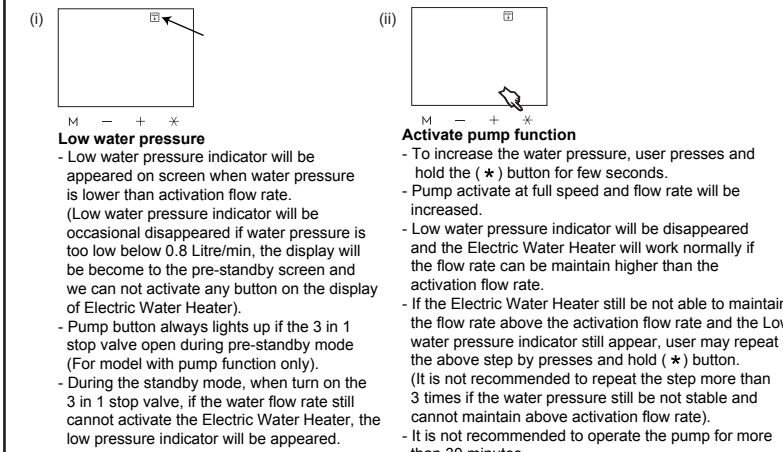
ELCB TEST/RESET BUTTON

a) ELCB ok:-
- Press TEST button
- The E1 display blink & beep 3 times and auto turn OFF.

b) ELCB failure:-
- Press TEST/RESET button
- The E4 display blink & beep 3 times and auto cut off, cannot be reset and please contact Electrolux customer service call centre.

9.7 LOW WATER PRESSURE

This Electric Water Heater can start and function at minimum rated flow rate :-

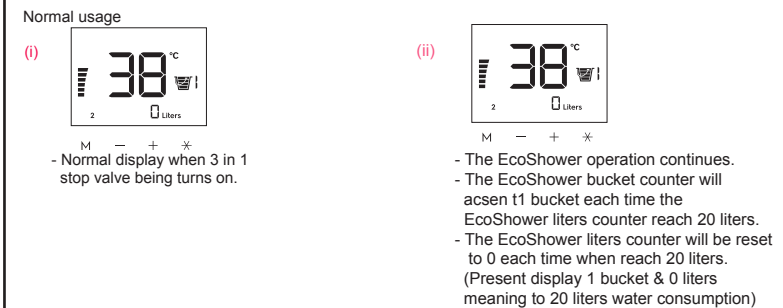


Low water pressure
- Low water pressure indicator will be appeared on screen when water pressure is lower than activation flow rate. (Low water pressure indicator will be occasional disappeared if water pressure is too low below 0.8 Litre/min, the display will become to the pre-standby screen and we can not activate any button on the display of Electric Water Heater).
- Pump button always lights up if the 3 in 1 stop valve open during pre-standby mode (For model with pump function only).
- During the standby mode, when turn on the 3 in 1 stop valve, if the water flow rate still cannot activate the Electric Water Heater, the low pressure indicator will be appeared.

Activate pump function
- To increase the water pressure, user presses and hold the (*) button for few seconds.
- Pump activate at full speed and flow rate will be increased.
- Low water pressure indicator will be disappeared and the Electric Water Heater will work normally if the flow rate can be maintain higher than the activation flow rate.
- If the Electric Water Heater still be not able to maintain the flow rate above the activation flow rate and the Low water pressure indicator still appear, user may repeat the above step by presses and hold (*) button. (It is not recommended to repeat the step more than 3 times if the water pressure still be not stable and cannot maintain above activation flow rate).
- It is not recommended to operate the pump for more than 30 minutes.

9.8 ECOShower OPERATION

EcoShower is to calculate water consumption by bucket (1 bucket = 20 Liters) and have Eco friendly environment benefits for user notification of water consumption on each shower. EcoShower will start activate whenever 3 in 1 stop valve being turns on.



Normal usage

(i) - Normal display when 3 in 1 stop valve being turns on.

(ii) - The EcoShower operation continues.
- The EcoShower bucket counter will ascen 11 bucket each time the EcoShower liters counter reach 20 liters.
- The EcoShower liters counter will be reset to 0 each time when reach 20 liters. (Present display 1 bucket & 0 liters meaning to 20 liters water consumption)

(iii) - Turn off the 3 in 1 stop valve the display goes into pre-standby.
- If the user continue shower within 15 minutes from previous section, the counter will continues. (Present display 3 bucket & 5 liters meaning to 65 liters water consumption)

- If the user did not shower more than 15 minutes, the counter will reset to zero.

12. TROUBLESHOOTING

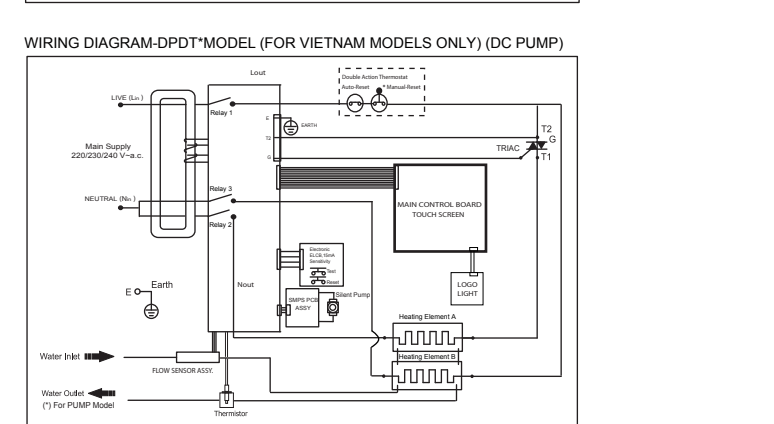
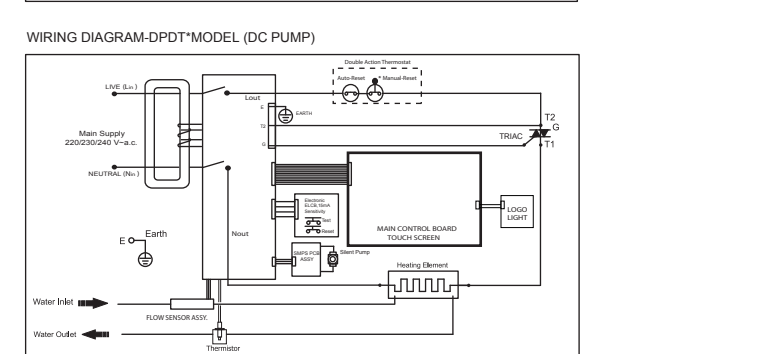
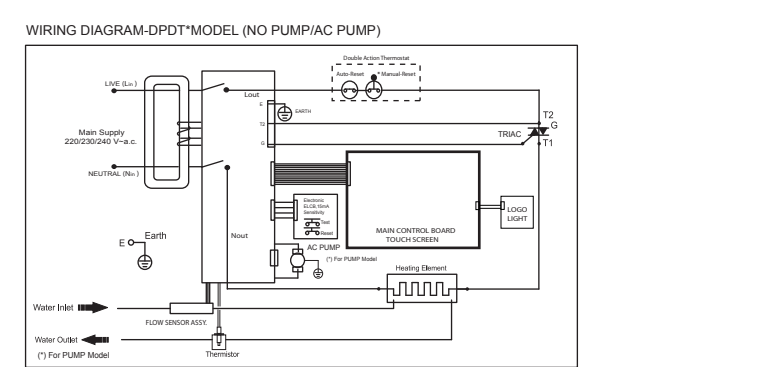
Problem/Symptom	Cause	Action/Cure
Electric Water Heater fail to operate, no power.	Interrupted power supply.	- Check the wire connection and main power supply. If it still fail to operate, contact Electrolux Customer Service Call Centre.
Water too hot.	Electric Water Heater malfunction.	- Check other appliances are having same phenominal and contact local Electricity Supply Company. Let the Electric Water Heater checked. If it still fail to operate, contact Electrolux Customer Service Call Centre.
	Not enough water flowing through the shower.	- Increase flow rate via water flow controller or 3 in 1 Stop valve. - Blocked of shower head - clean or replace.
	Blockage in water supply.	- Check if 3 in 1 stop valve are fully turns on. - Cleaning Mesh Filter and Built In Filter. (Refer to 11.2)
Water hot after close and reopen of 3 in 1 Stop Valve or Water Tap.	Incoming water temperature too high.	- Reduce the setting temperature via temperature adjuster. (Up, down button)
	Water temperature higher than set temperature when 3 in 1 Stop Valve or Water Tap is OFF a while and reopen again.	- Avoid shower with water output in that period. - Let the water flow few seconds before continue bathing.
Water too cool or cold.	Too much water flow.	- Reduce flow rate via water flow controller or 3 in 1 Stop valve.
	Water pressure below minimum required and water heater not function.	- Check water supply from mains or tank fed? - If tank fed, replumb to mains water supply and check if the water pressure is enough. - If mains fed, make sure that mains 3 in 1 stop valve is fully turns on and that there are no other restrictions in the water supply while water heater is in use.
	Incoming water temperature too low.	- Increase the setting temperature via temperature adjuster or 3 in 1 Stop valve.
	Electrical malfunction of Electric Water Heater.	- Contact Electrolux Customer Service Call Centre.
Water flow too low.	Safety Thermostat cut-out operated.	- Safety Thermostat cut-out operated. Contact Electrolux Customer Service Call Centre.
	3 in 1 Stop Valve Filter / Mesh Filter blocked.	- Clean the filter (refer 11.2).
Water flow too low.	3 in 1 Stop Valve not fully open.	- Open 3 in 1 Stop Valve to desire flow rate.
	Water supply insufficient.	- Check house water supply.

12. TROUBLESHOOTING (CONT'D)

Problem/Symptom	Cause	Action/Cure
Display appear E1 with [E]	Electrical leak can be triggered at any time in synchronisation with the beeps 3 times during usage or standby.	- Contact Electrolux Customer Service Call Centre.
Display appear Earth icon [E]	- If the Electric Water Heater is not earthed properly, the earth icon will appear on screen during usage or standby. - Earth icon also appear if Live & Neutral reverse connection	- Its recommended user must have proper earth connected to water heater. - Connect Live / Neutral correctly.
Display appear E2 and Thermistor icon [E]	The E2 and thermistor icon will appear and blink on screen in synchronisation with the beep due to thermistor Error.	- Contact Electrolux Customer Service Call Centre.
Display appear overheat icon [E]	The heater will be stops working and shows the overheat icon blinking if the temperature measured is above 55 degrees.	- The icon blink until temperature drop then return to normal functionality. - In the rare case, the icon does not return to normal functionality (safety thermostat cut -out operated), Contact Electrolux Customer Service Call Centre.
Display appear E4	E4 will blink in synchronisation with the beeps 3 times if the ELCB have problem during ELCB test.	- Contact Electrolux Customer Service Call Centre.

Notes:
* It is advised all electrical maintenance/ repairs to the shower should be carried out by a suitably qualified person.
* In the unlikely event of Electric Water Heater failure other than detailed in the fault finding page, please contact Electrolux Customer Service Call Centre for advice.

13. WIRING DIAGRAM



* Manual Reset (90°C Thermostat)
For Models rated 4.8kW and below, thermostat is manually resettable.
For models rated 6.0kW and above, thermostat needed to be replaced once permanently tripped.

* DPDT : Double Pole Double Action Thermostat

14. ELECTRICAL SPECIFICATION

TYPE	ELECTRONIC POWER CONTROL
ELECTRICAL LOADING	2.4kW 220V a.c. 10.9A 50Hz and 60Hz 3.8kW 220V a.c. 17.3A 50Hz and 60Hz 4.5kW 220V a.c. 20.5A 50Hz and 60Hz 4.8kW 220V a.c. 21.8A 50Hz and 60Hz 3.6kW 240V a.c. 15.0A 50Hz and 60Hz, (Malaysia Only)
Min. WATER FLOW RATE	2 Litre / min
Min. INLET WATER PRESSURE	0.1 Bar (10 kPa ; 1.45 psi)
Max. INLET WATER PRESSURE	6.0 Bar (0.6 MPa ; 87.02 psi)
WATER CONNECTION	1/2" BSP SINGLE POINT SYSTEM
DIMENSIONS	220 (W) X 401 (H) X 80 (T) mm
NET WEIGHT	1.5 kg - ELCB, DPDT, NO PUMP 2.5 kg - ELCB, DPDT, AC PUMP 2.0 kg - ELCB, DPDT, DC PUMP

Note : The specification, actual product's cosmetic design and accessories parts shown are correct at the time of printing and may be subjected to change without prior notice.

WE'RE THINKING OF YOU
Thank you for purchasing an Electrolux appliance. You've chosen a product that brings with it decades of professional experience and innovation. In ingenious and stylish, it has been designed with you in mind. So whenever you use it, you can be safe in knowledge that you'll get great results every time. Welcome to Electrolux.

Visit our website to:
- Get usage advice, brochures, trouble shooter, service information: www.electrolux.com
- Register your product for better service: www.registerelectrolux.com
- Buy Accessories, Consumables and Original spare parts for your appliance: www.electrolux.com/shop

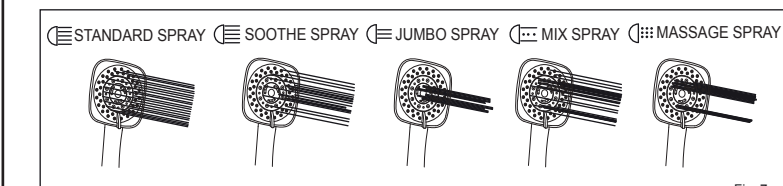
CONSUMER CARE AND SERVICE
We recommend the use of original spare parts.
When contacting Service, ensure that you have the following data available. The information can be found on the rating plate. Model, PNC, Serial Number. (Right side of unit).

Warning/ Caution-Safety information.
General information and tips.
Environmental information.

Subject to change without notice.

10. HANDSHOWER SPRAY

This Innovative adjustable Handshower has 5 different spray patterns (STANDARD, JUMBO, SOOTHE, MIX and MASSAGE). The patterns are described as following:



Move the Handshower to the desired angle. A ratchet mechanism in the Shower Holder will hold the Handshower in selected position. (Fig. 8)

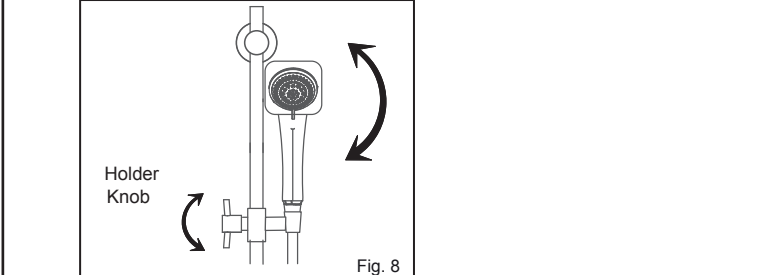


Fig. 8

11. MAINTENANCE

Read the section "3. SAFETY INFORMATION" first.

11.1 TEST THE "ELCB" REGULARLY
(This procedure is highly recommended test at least once a month)
Turn on the electricity and water supply. LED display will lights up after self checking.
Press the ELCB Test Button, Electric Water Heater should go off. Press the Reset Button to resume the electricity supply. (Refer to 8.6)

11.2 CLEAN THE FILTER REGULARLY
Clean the Mesh Filter regularly to prevent blockage. (Fig. 9) Remove the Built-in Filter by turning its cap anticlockwise. Whenever need flush the internal strainer with water to remove any trapped sediments. (Fig. 10) Whenever fixing back the Built-in Filter, beware of the alignment of Internal Strainer. Use the protruded guideline within 3 in 1 Stop Valve to position the Internal Strainer.

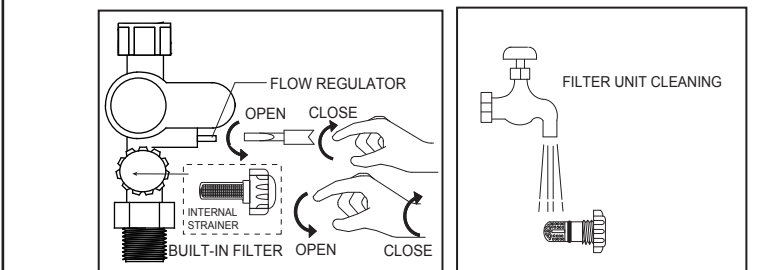


Fig. 9



Fig. 10

CONSUMER CARE

Indonesia
Hotline service: 08041199999
PT. Electrolux Indonesia
Electrolux Building
Jl. Abdul Muis No.34, Petojo Selatan,
Gambir Jakarta Pusat 10160
Email: customer-care@electrolux.co.id
SMS & WA : 0812.8088.8863

Malaysia
Consumer Care Center Tel: 1300-88-11-22
Electrolux Home Appliances Sdn. Bhd.
Corporate Office Address: Unit T2-7, 7th Floor, Tower 2, PJ33,
No. 3, Jalan Semangat, Seksyen 13,
46200 Petaling Jaya, Selangor.
Office Tel : (+60 3) 7843 5999
Office Fax : (+60 3) 7955 5511
Consumer Care Center Address: Lot C6, No. 28,
Jalan 15/22, Taman Perindustrian Tiong Nam,
40200 Shah Alam, Selangor
Consumer Care Center Fax : (+60 3) 5524 2521
Email : malaysia.customer-care@electrolux.com

Philippines
Consumer Care Center Toll Free : 1-800-10-845-CARE(2273)
Consumer Care Hotline : (+63 2) 845-CARE(2273)
Electrolux Philippines, Inc.
Unit B 125 Cyber Sigma Bldg, Lawton Avenue,
McKinley West, Taguig, Philippines 1634
Trunkline: +63 2 737-4757
Website : www.electrolux.com.ph
Email : wecare@electrolux.com

Singapore
Consumer Care Center Tel: (+65) 6727 3699
Electrolux S.E.A. Pte Ltd.
1 Fusionopolis Place,
#07-10 Galaxix, West Lobby
Singapore 138522.
Office Fax : (+65) 6727 3611
Email : customer-care.sin@electrolux.com

Thailand
Consumer Care Tel : (+66 2) 725 9000
Electrolux Thailand Co., Ltd.
Electrolux Building 14th Floor
1910 New Phetchaburi Road,
Bangkapi, Huai Khwang, Bangkok 10310
Office Tel : (+66 2) 7259 100
Office Fax : (+66 2) 7259299
Email : customer-care-thai@electrolux.com

Vietnam
Consumer Care Center Toll Free: 1800-58-88-99
Tel: (+84 28) 3910 5465
Electrolux Vietnam Ltd.
Floor 9th, A&B Tower
76 Le Lai Street - Ben Thanh Ward - District 1
Ho Chi Minh City - Vietnam
Office Tel: (+84 28) 3910 5465
Office Fax: (+84 28) 3910 5470
Email: vn-care@electrolux.com

Hongkong
Service Hotline: (+852) 3193 9888
DCH Electrical Appliances Services Centre
5/F, DCH Building, 20 Kai Chung Road,
Kowloon Bay, Hong Kong